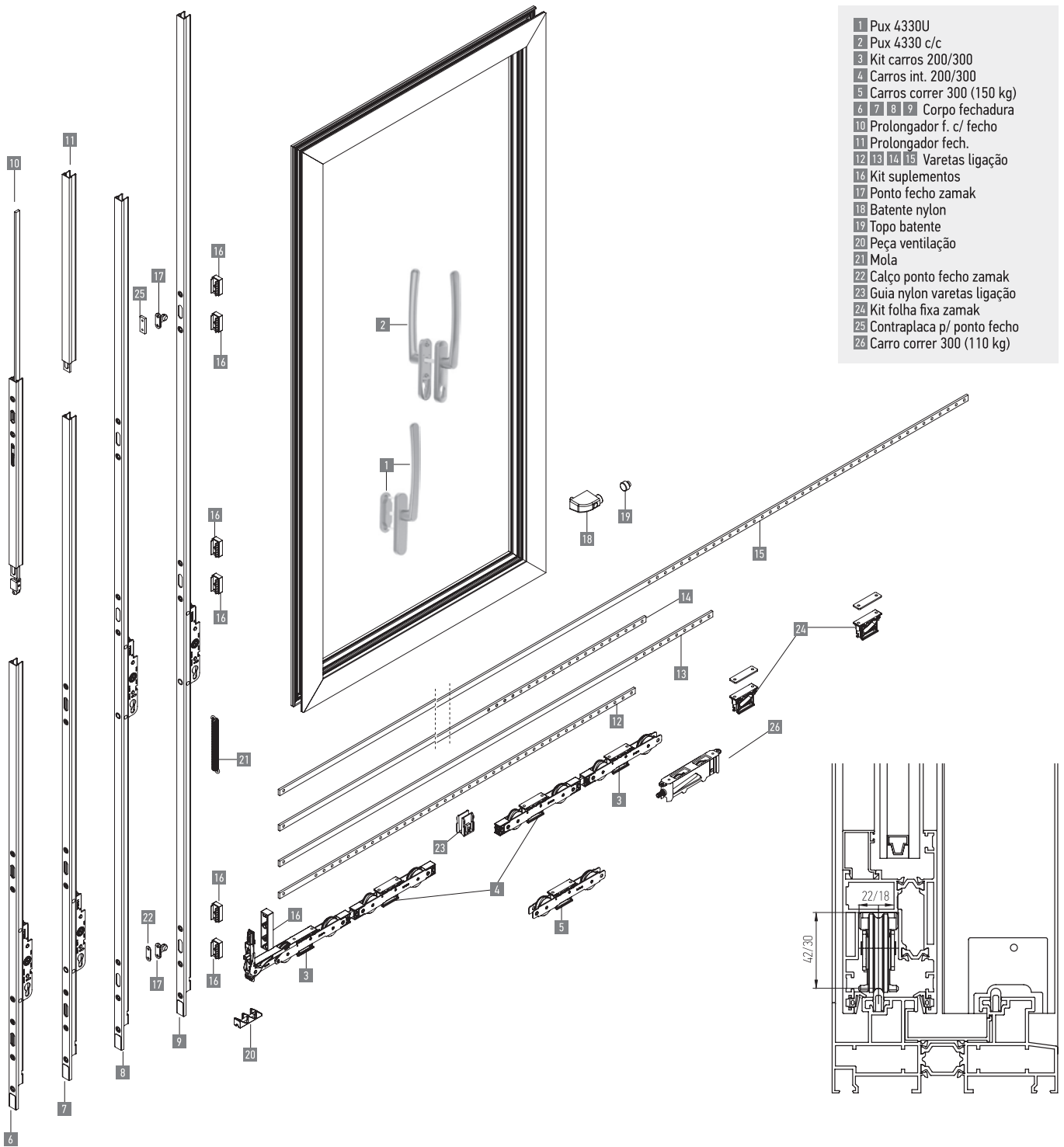
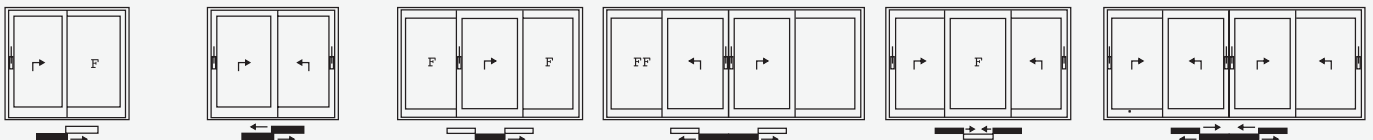


- 1 Pux 4330U
- 2 Pux 4330 c/c
- 3 Kit carros 200/300
- 4 Carros int. 200/300
- 5 Carros correr 300 (150 kg)
- 6 7 8 9 Corpo fechadura
- 10 Prolongador f. c/ fecho
- 11 Prolongador fech.
- 12 13 14 15 Varetas ligação
- 16 Kit suplementos
- 17 Ponto fecho zamak
- 18 Batente nylon
- 19 Topo batente
- 20 Peça ventilação
- 21 Mola
- 22 Calço ponto fecho zamak
- 23 Guia nylon varetas ligação
- 24 Kit folha fixa zamak
- 25 Contraplaca p/ ponto fecho
- 26 Carro correr 300 (110 kg)



Esquema/Diagram/Schemá



(A) 1 folha de correr - elevável / 1 fixa
1 hoja corredera-elevable / 1 fija
1 lift and slide sash / 1 fixed sash
1 vantail coulissant à levage / 1 fixe

(D) 2 folhas de correr - elevável
2 hojas corredera-elevable
2 lift and slide sashes
2 vantaux coulissants à levage

(G) 1 folha de correr - elevável / 2 fixas
1 hoja corredera-elevable / 2 fijas
1 lift and slide sash / 2 fixed sashes
1 vantail coulissant à levage / 2 fixes

(C) 2 folhas de correr - elevável / 2 fixas
2 hojas corredera-elevable / 2 fijas
2 lift and slide sash / 2 fixed sashes
2 vantaux coulissants à levage / 2 fixes

(H) 2 folhas de correr - elevável / 1 fixa
2 hojas corredera-elevable / 1 fija
2 lift and slide sash / 1 fixed sashes
2 vantaux coulissants à levage / 1 fixe

(F) 4 folhas de correr - elevável
4 hojas corredera-elevable
4 lift and slide sashes
4 vantaux coulissants à levage



4330U



4330C/C



4330

**EMBALAGEM - PACKAGING
EMPAQUETADO - EMBALLAGE**

1 unidade por caixa
1 unit per box
1 unidade por caja
1 unité par boîte

**MATERIAIS - MATERIALS
MATERIALES - MATERIAUX**

Alumínio - Zamak - Inox
Alluminium - Zamak - Stainless Steel
Aluminio - Zamak - Acero Inox
Alluminium - Zamak - Inox

**FIXAÇÃO - FIXING
FIJACIÓN - FIXATION**

Parafusos incluídos
Screws included
Tornillos incluidos
Vis inclus

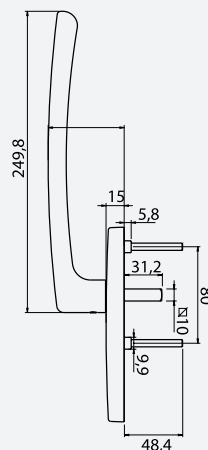
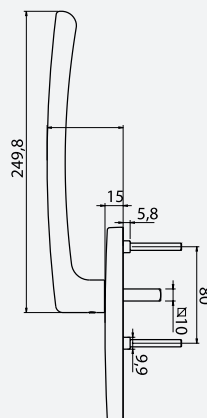
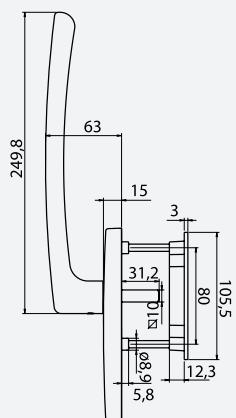
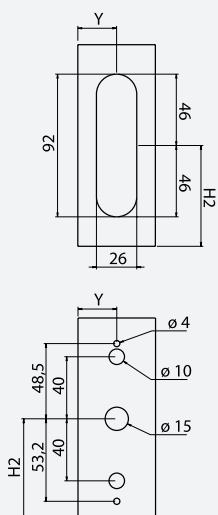
**ACABAMENTO - FINISHING
ACABADOS - FINITION**

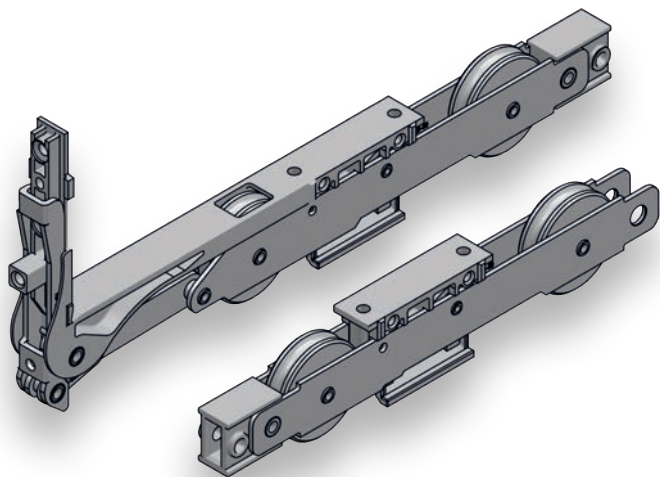
Lacado
Powder painting
Lacado
Laqué

**NORMA - STANDARD
NORMA - NORME**

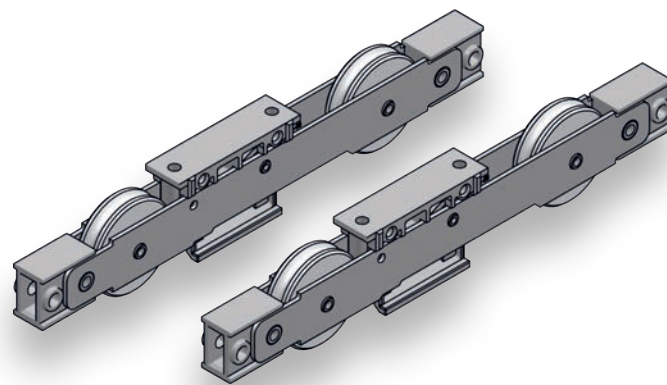
EN 1670
EN 13126-16

MULETA · HANDLE · MANILLA · BÉQUILLE





**KIT CARROS 300
(MR0045)**



**KIT CARROS INTERMÉDIO 300
(MR0050)**

**EMBALAGEM - PACKAGING
EMPAQUETADO - EMBALLAGE**

1 kit por caixa
1 kit per box
1 kit por caja
1 kit par boîte

**MATERIAIS - MATERIALS
MATERIALES - MATERIAUX**

Zamak - Ferro - Nylon
Zamak - Iron - Nylon
Zamak - Hierro - Nylon
Zamak - Fer - Nylon

**FIXAÇÃO - FIXING
FIJACIÓN - FIXATION**

Parafusos incluídos
Screws included
Tornillos incluidos
Vis inclus

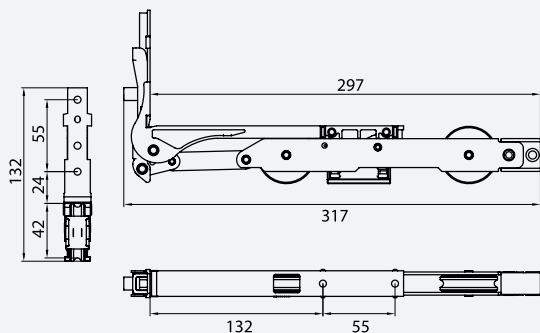
**ACABAMENTO - FINISHING
ACABADOS - FINITION**

Zincado c/ vibrado
Zinc with vibrated
Zincado con vibrado
Zinc avec vibré

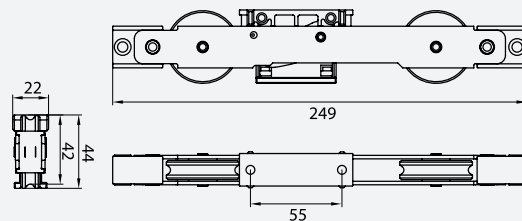
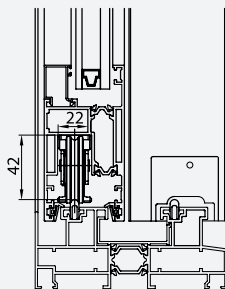
**NORMA - STANDARD
NORMA - NORME**

EN 13126-16

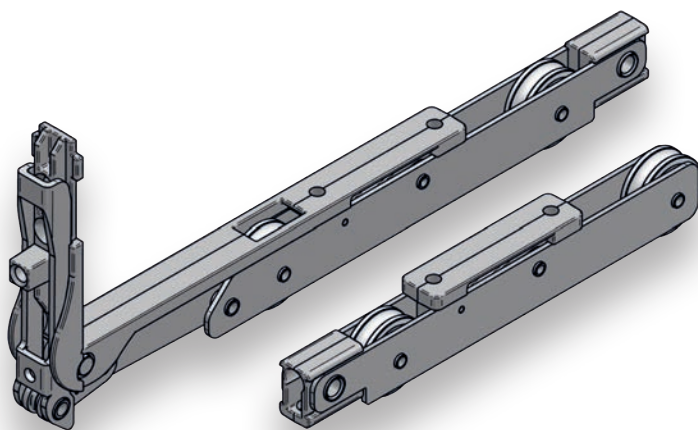
KIT CARROS · BOGIES · JUEGO BÁSICO DE CARROS · JEU DE GALETS DE BASE



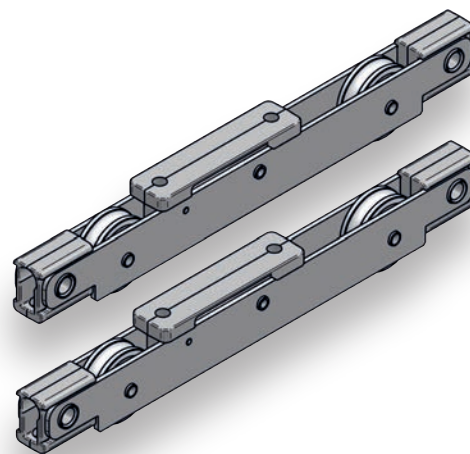
KIT CARROS 300



KIT CARROS INTERMÉDIO 300



**KIT CARROS 200
(MR0020)**



**KIT CARROS INTERMÉDIO 200
(MR0033)**

**EMBALAGEM - PACKAGING
EMPAQUETADO - EMBALLAGE**

1 kit por caixa
1 kit per box
1 kit por caja
1 kit par boîte

**MATERIAIS - MATERIALS
MATERIALES - MATERIAUX**

Zamak - Aço - Nylon
Zamak - Steel - Nylon
Zamak - Acero - Nylon
Zamak - Acier - Nylon

**FIXAÇÃO - FIXING
FIJACIÓN - FIXATION**

Parafusos incluídos
Screws included
Tornillos incluidos
Vis inclus

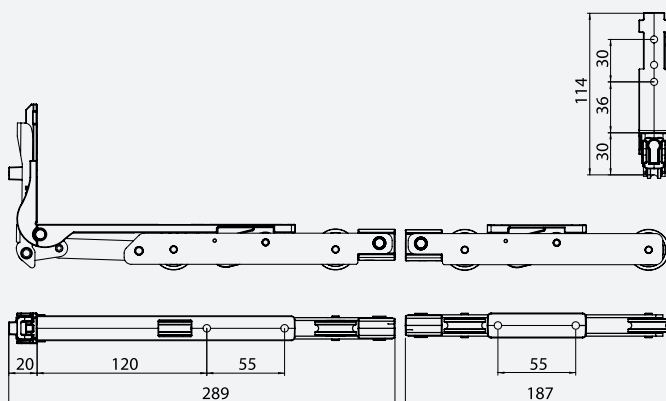
**ACABAMENTO - FINISHING
ACABADOS - FINITION**

Zincado c/ vibrado
Zinc with vibrated
Zincado con vibrado
Zinc avec vibré

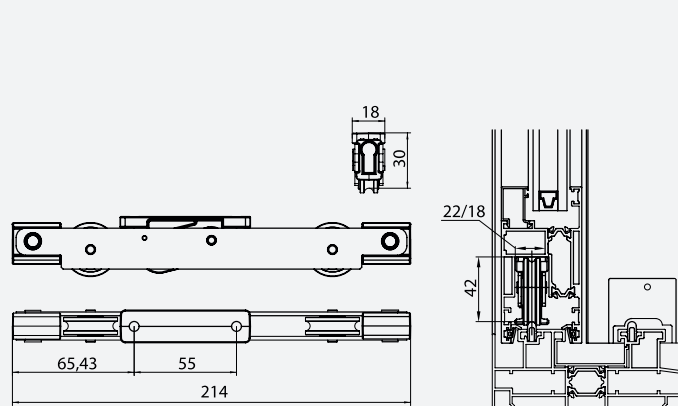
**NORMA - STANDARD
NORMA - NORME**

EN 13126-16

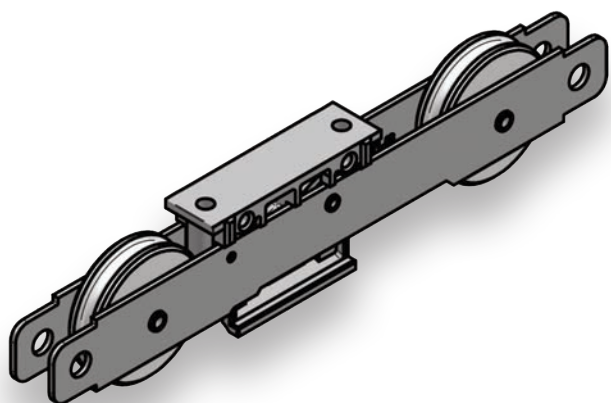
KIT CARROS · BOGIES · JUEGO BÁSICO DE CARROS · JEU DE GALETS DE BASE



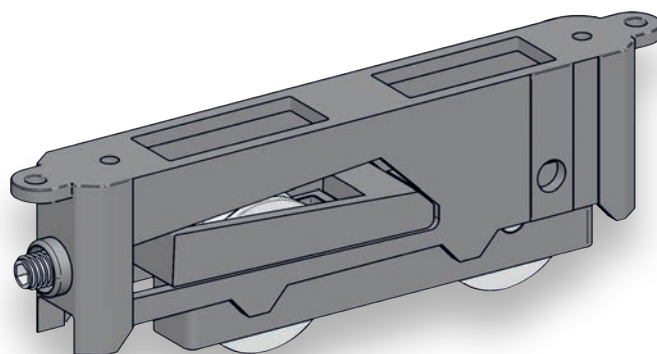
KIT CARROS 200



KIT CARROS INTERMÉDIO 200



**CARRO CORRER 300
(MR0054)**



**CARRO CORRER 300
(MR0055)**

**EMBALAGEM - PACKAGING
EMPAQUETADO - EMBALLAGE**

1 kit por caixa
1 kit per box
1 kit por caja
1 kit par boîte

**MATERIAIS - MATERIALS
MATERIALES - MATERIAUX**

Zamak - Ferro - Nylon
Zamak - Iron - Nylon
Zamak - Hierro - Nylon
Zamak - Fer - Nylon

**FIXAÇÃO - FIXING
FIJACIÓN - FIXATION**

Parafusos incluídos
Screws included
Tornillos incluidos
Vis inclus

**ACABAMENTO - FINISHING
ACABADOS - FINITION**

Zincado c/ vibrado
Zinc with vibrated
Zincado con vibrado
Zinc avec vibré

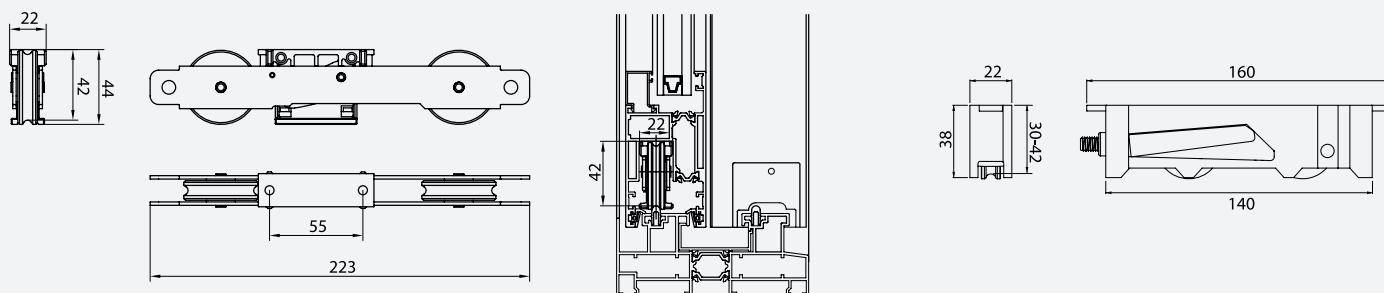
**NORMA - STANDARD
NORMA - NORME**

EN 13126-16

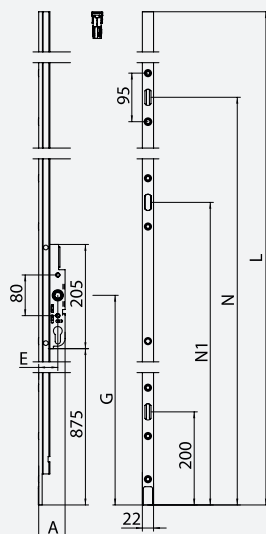
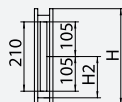
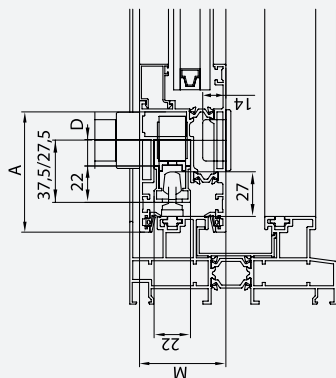
**OBSERVAÇÕES - COMMENTS
OBSERVACIONES - OBSERVATIONS**

MR0054 - 2 carros x 150 kg = 300 kg
MR0055 - 2 carros x 110 kg = 220 kg

CARRO CORRER · ADDITIONAL BOGIE · CARRO PARA CORREDERA EN LÍNEA · JEU DE GALETS POUR COULISSANT EN LIGNE



CORPO FECHADURA
GEAR (CREMONE)
FALLEBA (CREMONA)
GEAR (CRÉMONE)



MEDIDAS JANELAS / PORTAS

	ELEV. 200 CF27,5 REF.	ELEV. 300 CF37,5 REF.	ALTURAS (mm)
CF1	MR0015	MR0040	750/1295
CF2	MR0016	MR0041	1165/1795
CF3	MR0017	MR0042	1795/2295
CF4	MR0018	MR0043	2045/2700

ref. ^a	L	E	G	A	N	N1
CF1-37,5	1190	37,5	400	52	650	-
CF1-27,5	1190	27,5	400	42	650	-
CF2-37,5	1770	37,5	400	52	1020	580
CF2-27,5	1770	27,5	400	42	1020	580
CF3-37,5	2270	37,5	900	52	1650	1180
CF3-27,5	2270	27,5	900	42	1650	1180
CF4-37,5	2670	37,5	900	52	1900	1180
CF4-27,5	2670	27,5	900	42	1900	1180

Quotas corpo fechadura
Mechanising for gears
Mecanizado para fallebas
Usinage pour espagnolettes



EMBALAGEM - PACKAGING
EMPAQUETADO - EMBALLAGE

1 unidade por caixa
1 unit per box
1 unidade por caixa
1 unit per box
1 unité par boîte

MATERIAIS - MATERIALS
MATERIALES - MATERIAUX

Zamak - Ferro - Nylon
Zamak - Iron - Nylon
Zamak - Hierro - Nylon
Zamak - Fer - Nylon

FIXAÇÃO - FIXING
FIJACIÓN - FIXATION

Parafusos incluídos
Screws included
Tornillos incluidos
Vis inclus

ACABAMENTO - FINISHING
ACABADOS - FINITION

Lacado / Anodizado
Powder painting / Anodized
Lacado / Anodizado
Laqué / Anodisé

NORMA - STANDARD
NORMA - NORME

EN 1670
EN 1935

- (1) MR0025
- (2) MR0026
- (3) MR0027
- (4) MR0028



EMBALAGEM - PACKAGING
EMPAQUETADO - EMBALLAGE

1 unidade por caixa
1 unit per box
1 unidade por caja
1 unité par boîte

MATERIAIS - MATERIALS
MATERIALES - MATERIAUX

Ferro
Iron
Hierro
Fer

FIXAÇÃO - FIXING
FIJACIÓN - FIXATION

Parafusos incluídos
Screws included
Tornillos incluidos
Vis inclus

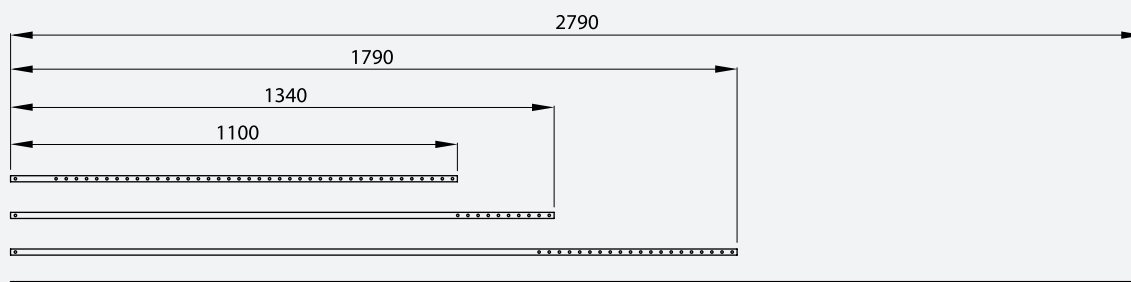
ACABAMENTO - FINISHING
ACABADOS - FINITION

Zincado
Zinc
Zincado
Zinc

NORMA - STANDARD
NORMA - NORME

EN 13126-16

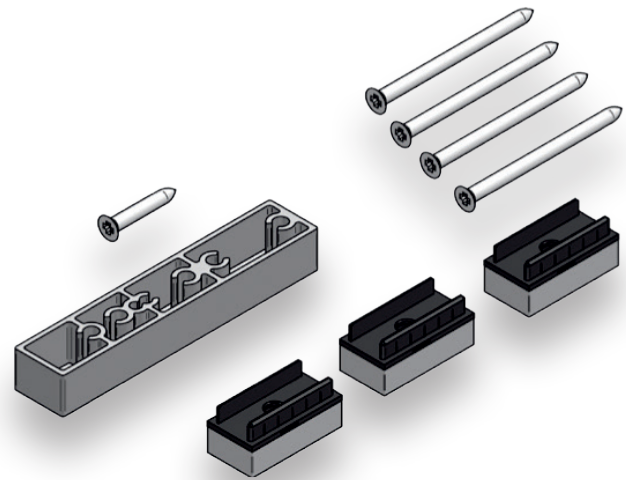
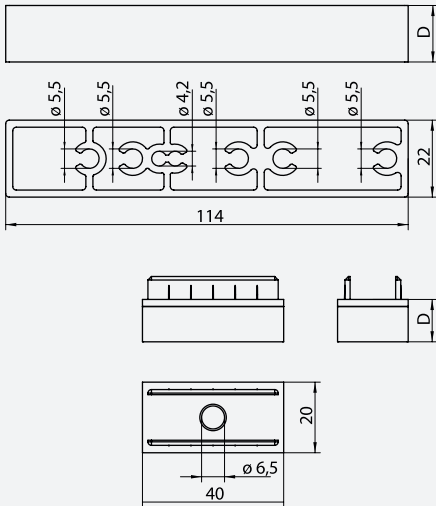
VARETAS LIGAÇÃO · CONNECTING RODS GUIAS · PLETINAS UNIÓN CARROS GUIDES · MÉPLATS UNION GALETS



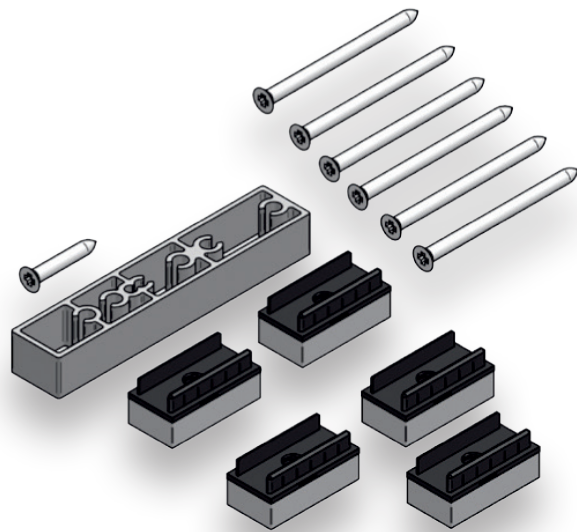
MEDIDAS JANELAS / PORTAS

REF.	VARETAS	LARGURA (mm)
MR0025	1100	700/1600
MR0026	1340	1600/1850
MR0027	1790	1851/2350
MR0028	2790	2351/3300

KIT SUPLEMENTOS
SUPPLEMENTS FOR GEAR
SUPLEMENTOS DE FALLEBA
SUPPLÉMENTS D'ESPAGNOLETTE



KIT SUPLEMENTOS CF 1



KIT SUPLEMENTOS CF 2/3/4

EMBALAGEM - PACKAGING
EMPAQUETADO - EMBALLAGE

1 unidade por caixa
1 unit per box
1 unidade por caja
1 unité par boîte

MATERIAIS - MATERIALS
MATERIALES - MATERIAUX

Zamak - Aço - Nylon
Zamak - Steel - Nylon
Zamak - Acero - Nylon
Zamak - Acier - Nylon

FIXAÇÃO - FIXING
FIJACIÓN - FIXATION

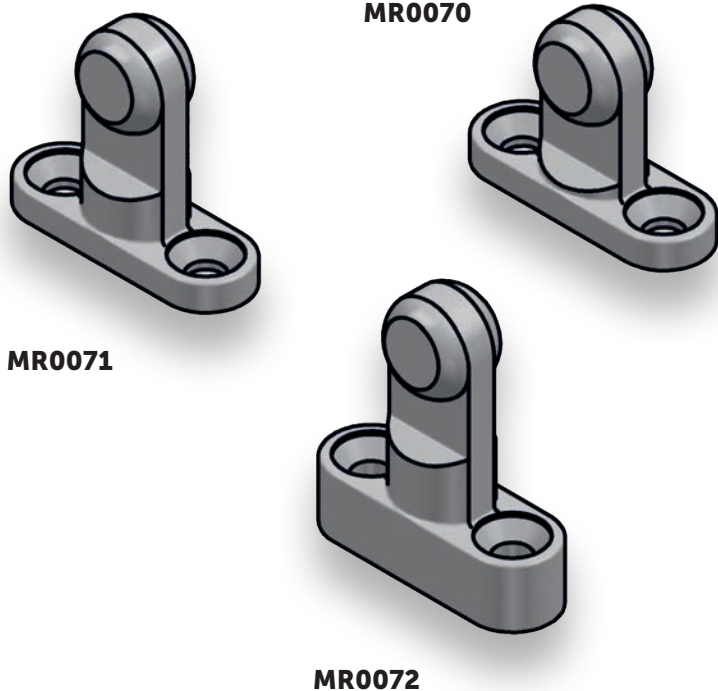
Parafusos incluídos
Screws included
Tornillos incluidos
Vis inclus

ACABAMENTO - FINISHING
ACABADOS - FINITION

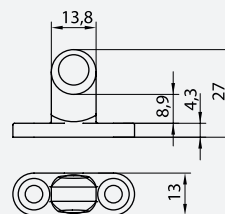
Zincado
Zinc
Zincado
Zinc

NORMA - STANDARD
NORMA - NORME

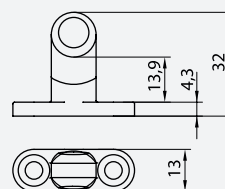
EN 13126-16



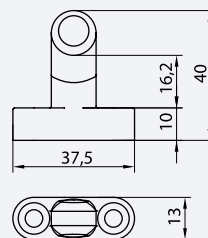
PONTOS FECHO ZAMAK
LOCKING POINTS FOR LIFT AND SLIDE FITTING
PUNTOS DE CIERRE CORREDERA ELEVABLE
POINTS DE FERMETURE POUR COULISSANT À LEVAGE



MR0070



MR0071



MR0072

EMBALAGEM - PACKAGING
EMPAQUETADO - EMBALLAGE

1 unidade por caixa
1 unit per box
1 unidade por caja
1 unité par boîte

MATERIAIS - MATERIALS
MATERIALES - MATERIAUX

Zamak - Aço - Nylon
Zamak - Steel - Nylon
Zamak - Acero - Nylon
Zamak - Acier - Nylon

FIXAÇÃO - FIXING
FIJACIÓN - FIXATION

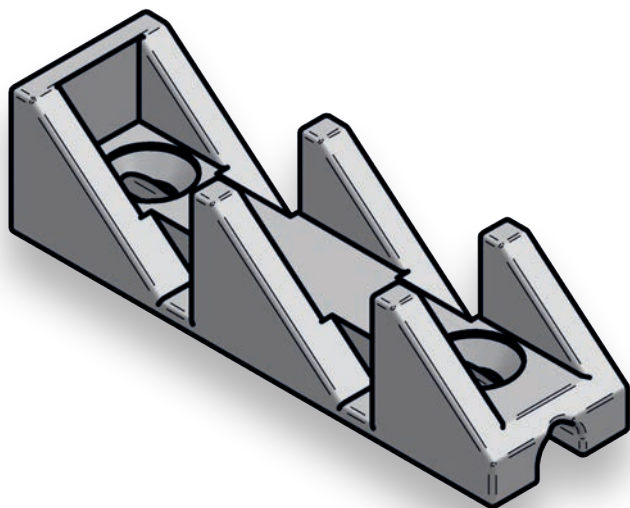
Parafusos incluídos
Screws included
Tornillos incluidos
Vis inclus

ACABAMENTO - FINISHING
ACABADOS - FINITION

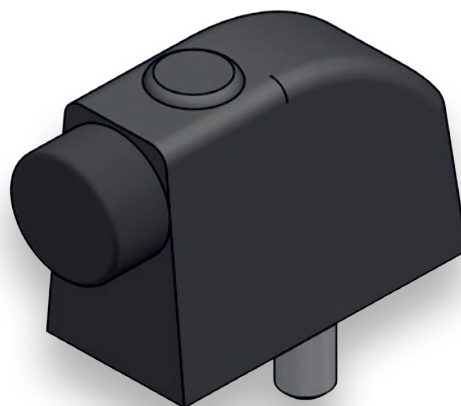
Zincado
Zinc
Zincado
Zinc

NORMA - STANDARD
NORMA - NORME

EN 13126-16



**PEÇA VENTILAÇÃO
(MR0077)**



**BATENTE NYLON
(MR0075 - PRETO)
(MR0076 - BRANCO)**



**TOPO NYLON
(MR0073 - PRETO)
(MR0074 - BRANCO)**

**EMBALAGEM - PACKAGING
EMPAQUETADO - EMBALLAGE**

1 unidade por caixa
1 unit per box
1 unidade por caja
1 unité par boîte

**MATERIAIS - MATERIALS
MATERIALES - MATERIAUX**

Zamak - Nylon
Zamak - Nylon
Zamak - Nylon
Zamak - Nylon

**FIXAÇÃO - FIXING
FIJACIÓN - FIXATION**

Parafusos incluídos
Screws included
Tornillos incluidos
Vis inclus

**ACABAMENTO - FINISHING
ACABADOS - FINITION**

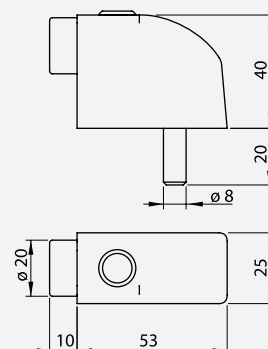
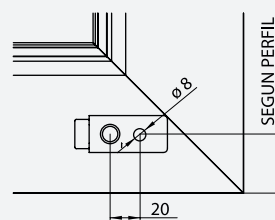
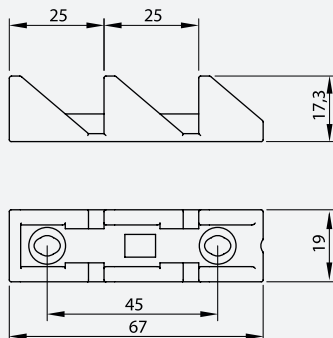
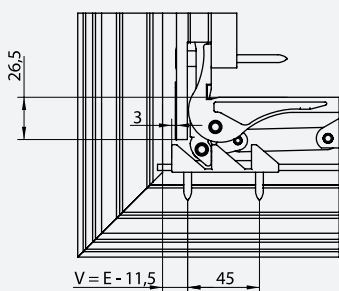
Zincado
Zinc
Zincado
Zinc

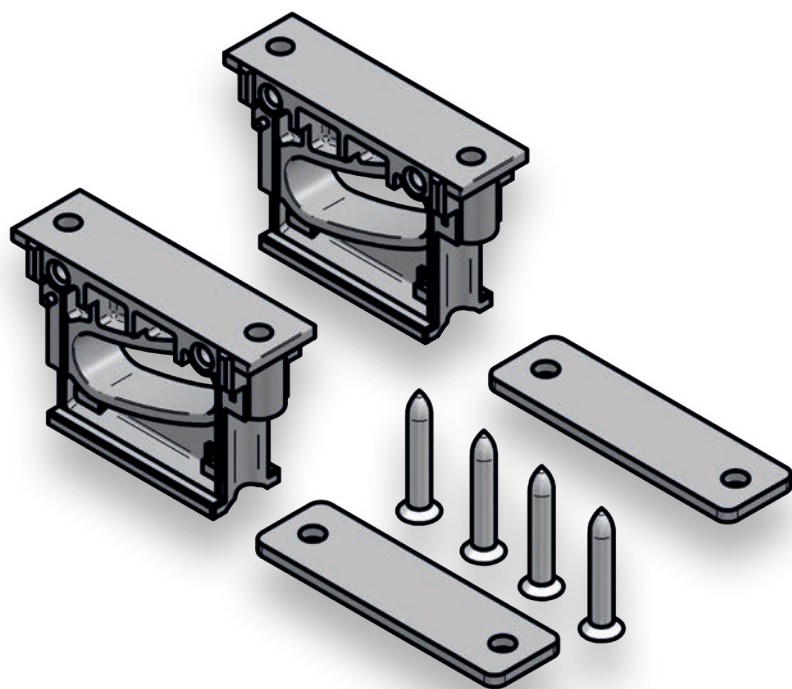
**NORMA - STANDARD
NORMA - NORME**

EN 13126-16

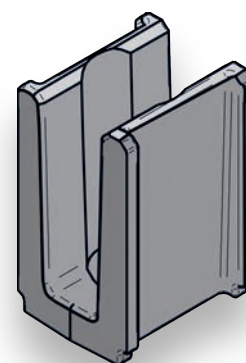
PEÇA VENTILAÇÃO · VENTILATION LIMITER · DELIMITADOR DE VENTILACIÓN · LIMITEUR D'AÉRATION

BATENTE NYLON · SASH BUFFER 90 + SHOCK ABSORBER · TOPE 90 + AMORTIGUADOR · BUTÉE D'ARRÊT 90 + AMORTISSEUR BUTÉE

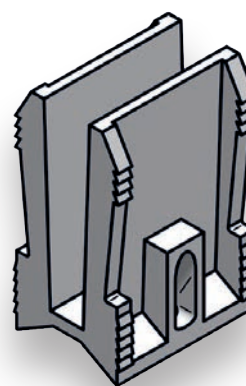




**KIT FOLHA FIXA 300
(MR0060)**



**GUIA NYLON 200
(MR0030)**



**GUIA NYLON 300
(MR0047)**

**EMBALAGEM - PACKAGING
EMPAQUETADO - EMBALLAGE**

1 unidade por caixa
1 unit per box
1 unidade por caja
1 unité par boîte

**MATERIAIS - MATERIALS
MATERIALES - MATERIAUX**

Zamak - Aço - Nylon
Zamak - Steel - Nylon
Zamak - Acero - Nylon
Zamak - Acier - Nylon

**FIXAÇÃO - FIXING
FIJACIÓN - FIXATION**

Parafusos incluídos
Screws included
Tornillos incluidos
Vis inclus

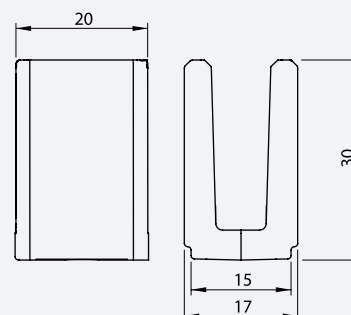
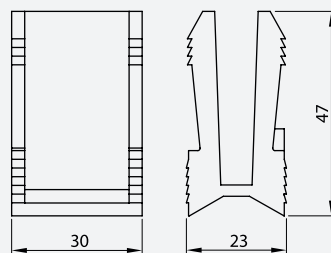
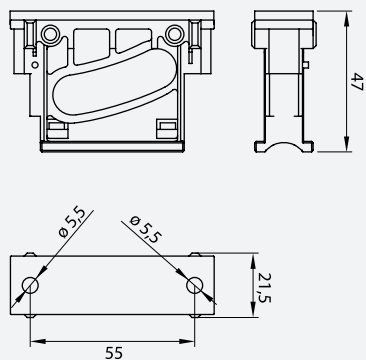
**ACABAMENTO - FINISHING
ACABADOS - FINITION**

Zincado
Zinc
Zincado
Zinc

**NORMA - STANDARD
NORMA - NORME**

EN 13126-16

KIT FOLHA FIXA · CT-SUPPLEMENTS FOR FIXED SASH · CT-SUPLEMENTOS PARA HOJA FIJA · CT-SUPPLÉMENTS POUR VANTAIL FIXE
GUIA NYLON · CONNECTING RODS GUIDE · GUÍA PLETINA UNIÓN · GUIDE MÉPLAT UNION

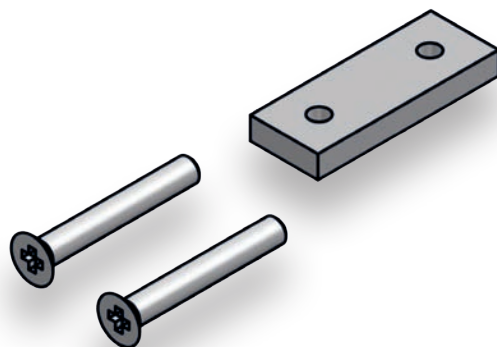




**PROLONGADOR
C/ FECHO (MR0063)**



**PROLONGADOR
(MR0064)**



**CONTRAPLACA
PONTO FECHO
(MR0061)**



**CALÇO PONTO FECHO
(MR0069)**

**EMBALAGEM - PACKAGING
EMPAQUETADO - EMBALLAGE**

1 unidade por caixa
1 unit per box
1 unidade por caja
1 unité par boîte

**MATERIAIS - MATERIALS
MATERIALES - MATERIAUX**

Alumínio - Zamak - Inox
Alluminium - Zamak - Stainless Steel
Aluminio - Zamak - Acero Inox
Alluminium - Zamak - Inox

**FIXAÇÃO - FIXING
FIJACIÓN - FIXATION**

Parafusos incluídos
Screws included
Tornillos incluidos
Vis inclus

**ACABAMENTO - FINISHING
ACABADOS - FINITION**

Zincado
Zinc
Zincado
Zinc

**NORMA - STANDARD
NORMA - NORME**

EN 13126-16

PROLONGADORES · EXTRA GEAR LENGTH · PROLONGACIONES FALLEBA · PROLONGEMENTS ESPAGNOLETTE
CONTRAPLACA PONTO FECHO · CT-COUNTER-PLATE DIAGRAM C AND F · CT-CONTRAPLACA ESQUEMA C Y F · CT-CONTREPLAQUE SCHÉMA C ET F
CALÇO PONTO FECHO · LOCKING BOLT SUPPLEMENT · SUPLEMENTO BULÓN CIERRE · SUPPLÉMENT BOULON FERMETURE

