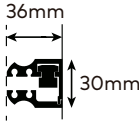
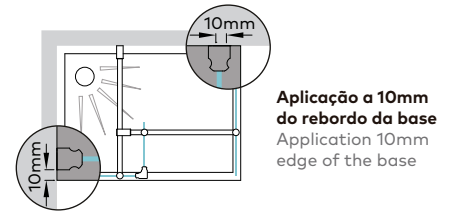
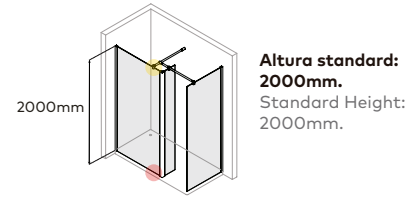




Perfil vertical
Wall profile

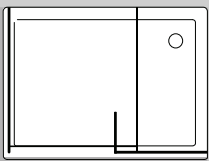


Perfil de canto
Corner profile

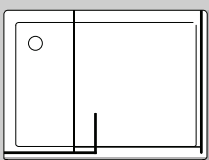


Tipologias Typologies

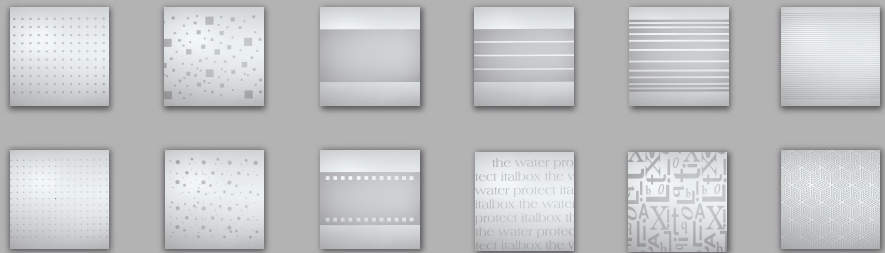
Lateral esquerdo + fixo direito
Lateral left panel + Fixed right panel



Lateral direito + fixo esquerdo
Lateral right panel + Fixed left panel



Foscagem Sandblasting

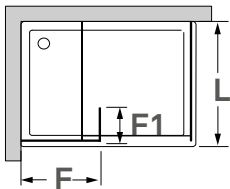


Largura mínima para fixo (F1): 200 mm.
Acessórios em latão cromado.
Vidro temperado de 8mm.
Perfis em alumínio anodizado cromado brilho.
Altura Standard: 2000mm.
Acresce a altura do sistema de fixação (+30mm).
Definir medidas exactas na encomenda.
Outras dimensões sob consulta.

Minimum width for the fixed panel (F1): 200 mm.
Brass fittings.
8mm tempered glass panels.
Anodised chromed gloss-finish aluminium profiles.
Standard Height: 2000mm.
Additional height of the fixation system (+30mm).
Specify exact sizes on the order.
Other dimensions only on request.

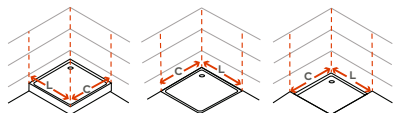
Medidas Standard

Standard Dimensions



Aferição de medidas

Ascertaining the measurements



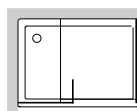
base
shower
tray

cota zero
zero height

rebaixo
recessed

PR600

Compensação angular
Adjustments



As medidas fornecidas devem ser resultantes da medição até à face exterior da base.

Compensações feitas a cargo da ITALBOX.

The provided measurements should be made to the outer face of the base.

Adjustments made by ITALBOX.

Foscagem com

tratamento

anti-manchas

Anti-stain
treatment for
sandblasting glass



Por medida.

Custom-made.



Vidro 8mm.

8mm glass.



Tratamento

anti-calcário

Anti-calcium
treatment



58%

